

elma
LOCK

PIÈCES DE RECHANGE
ERSATZTEILE
SPARE PARTS
PIEZAS DE RECAMBIO

457 592—3

Nov. 1988 Printed in Japan

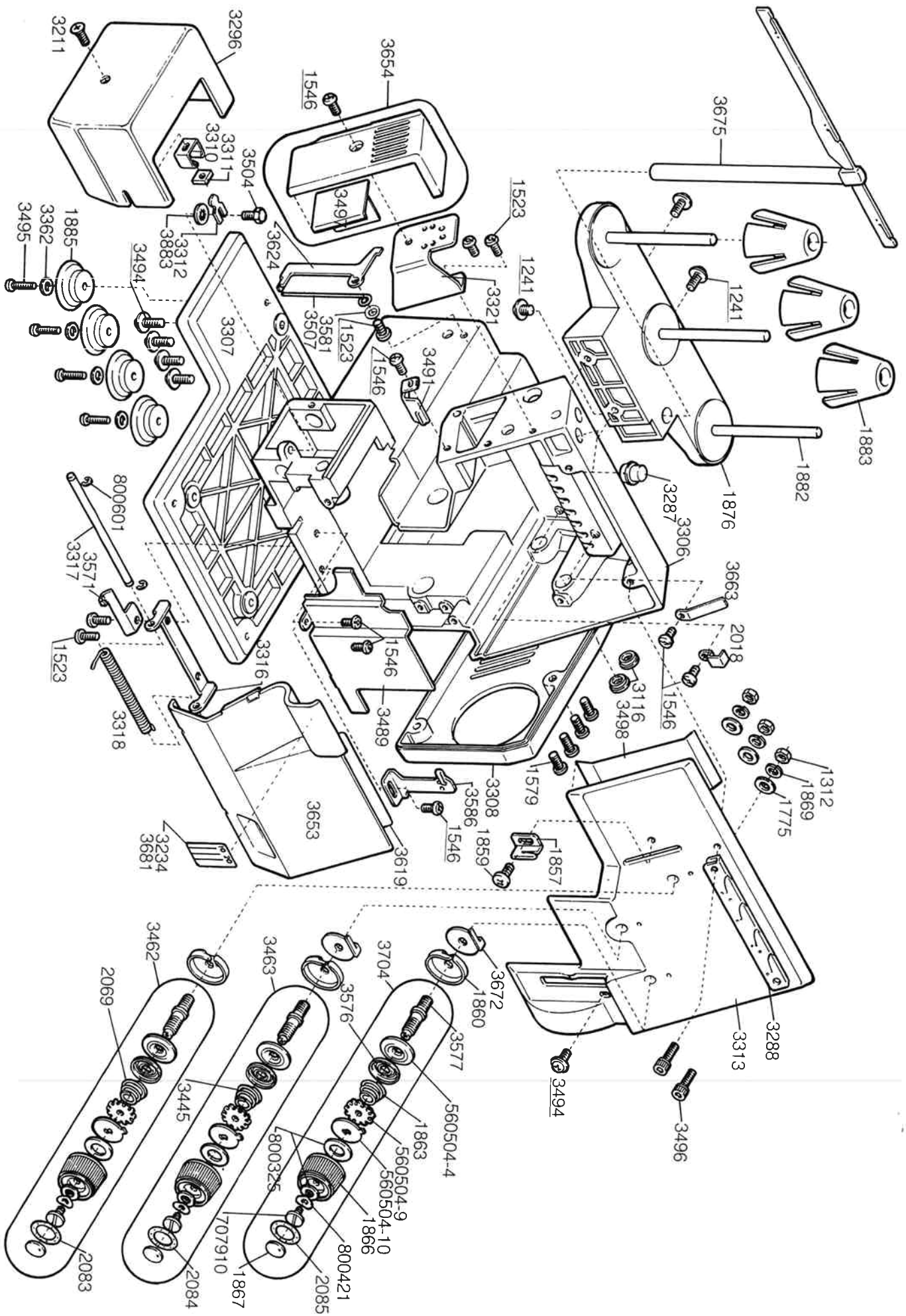
F3

INDEX

1. Casing, external parts, covers, flap, spool pin case, spool holders, guides, thread tension controls, rubber feet, lamp bracket.
2. Mechanical parts, shafts, eccentrics, rods, feed, presser foot, loopers, blades, flywheel motor velt, bearings, thread take-ups, needle plate
3. Electrical parts; motor assemblies, lamp sockets, lamps, switches, motor bracket, connectors, terminals, foot controls, cord sets.
4. Accessories, instruction manula, service gauges, packing, extra accessories
6. Part number index and weight

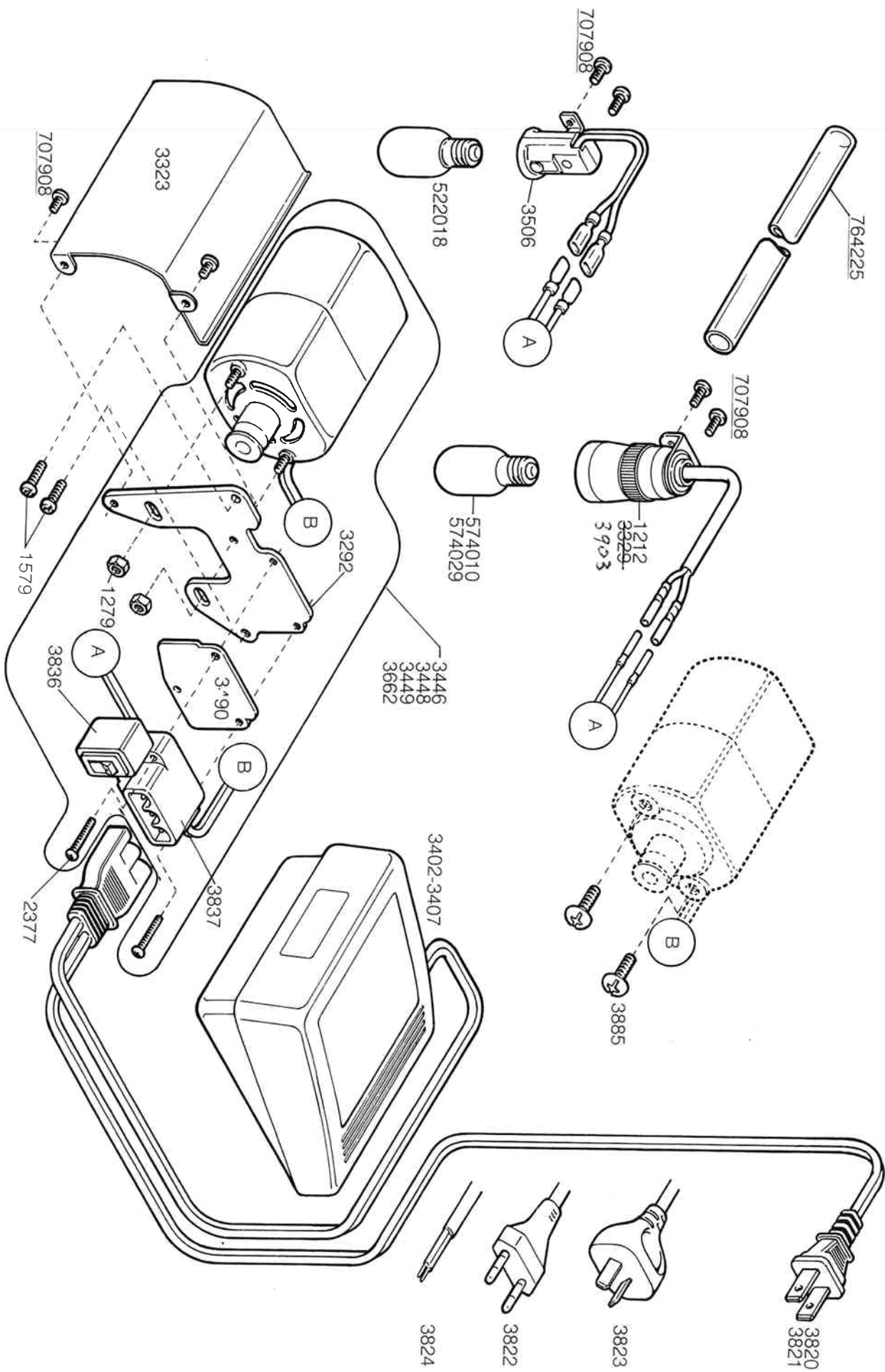
Remark:

800000 Number underlined: Parts appearing more than once on the same page.

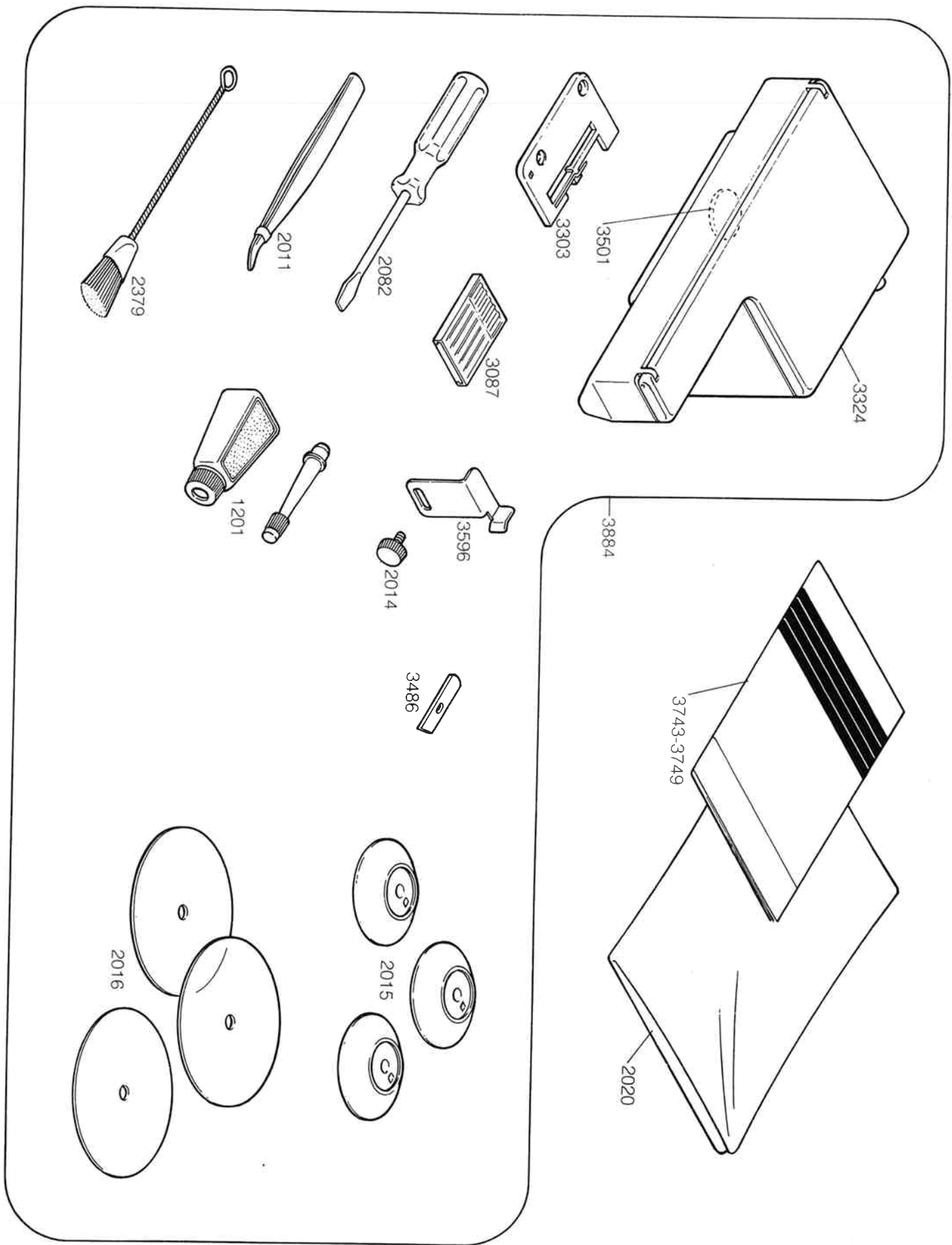


PART NO.	TAVARO NO.	NAME OF PART	PART NO.	TAVARO NO.	NAME OF PART
1241	395049-19	Screw TPMAX10	3507	396007-91	Accessory case stop spring
1312	395061-12	Nut M6	3571	396007-94	Front flap stop
1523	395052-18	Screw MAX8	357b	396007-95	Tension disc - Front
1546	395052-37	Screw MAX6	3577	396007-96	Tension stud
1579	395052-57	Screw MAX10	3581	396007-97	Washer 4X7X0.8
1775	395053-74	Washer 6X13X1	3586	396008-00	Fixed thread guide
1857	396003-21	Right needle thread guide	3619	396008-02	Thread chart
1859	396003-23	Screw MAX8B	3624	396008-03	Acc. case stop spring holder
1860	396003-24	Tension plate	3653	396008-04	Front flap -F3
1863	396003-27	Tension spring ϕ 0.8	3654	396008-05	Lamp cover
1866	396003-30	Tension knob	3663	396008-07	Cord holder (3)
1867	396003-31	Tension cap	3672	396008-09	Tension dial thread guide
1869	396003-32	Spring washer ϕ 6	3675	396008-10	Thread guide pole assem.
1876	396003-36	Spool holder assem.	3681	396008-12	Seam guide label (CM) F3
1882	396003-39	Spool pin	3704	396008-13	Tension dial (D- ϕ 0.8)
1883	396002-10	Spool holder	3883	396008-32	Toothed lock washer ϕ 4
1885	396003-40	Rubber foot	560504-4	395128-14	Tension disc - Rear
2018	396004-35	Cord holder	560504-9	395128-15	Tension adj. plate
2069	396004-39	Tension spring ϕ 1.1	560504-10	395128-16	Tension stopper
2083	396004-49	Tension dial plate, red	707910	395430-00	Screw TPM 4X8
2084	396004-50	Tension dial plate, yellow	800325	395128-19	Washer DT
2085	396004-51	Tension dial plate, green	800421	395128-20	Friction washer SW 5X12X0.1
3116	396007-02	Cap	800601	395464-00	Snap ring
3211	396007-10	Flush screw M3X6			
3234	396007-11	Seam guide decal - Inch			
3287	396007-28	Needle bar cap			
3288	396007-29	Upper thread guide			
3296	396007-34	Free-arm cover			
3306	396007-38	Casing			
3307	396007-39	Machine base			
3308	396007-40	Motor cover			
3310	396007-41	Free-arm cover stopper spring			
3311	396007-42	Spring stopper plate			
3312	396007-43	Free-arm cover stopper			
3313	396007-44	Front cover comp.			
3316	396007-45	Front flap hinge			
3317	396007-46	Front flap hinge axle			
3318	396007-47	Front flap hinge spring			
3321	396007-48	Lamp bracket			
3362	396007-51	Washer 3.5X8X0.5			
3445	396006-25	Tension spring ϕ 1.0			
3462	396007-64	Tension dial assem. (A- ϕ 1.1)			
3463	396007-65	Tension dial assem. (B- ϕ 1.0)			
3489	396007-75	Protection cover			
3491	396007-77	Needle thread guide			
3494	396007-80	Screw TPMAX12			
3495	396007-81	Tapping screw M3.5X12			
3496	396007-82	Allen screw MAX14			
3497	396007-83	Reflex plate - Lamp cover			
3498	396007-84	Reflex plate - Front cover			
3504	396007-89	Bolt MAX8			

PART NO.	TAVARO NO.	NAME OF PART	PART NO.	TAVARO NO.	NAME OF PART	PART NO.	TAVARO NO.	NAME OF PART
1083	395147-24	Friction washer	3259	396007-18	Feed dog	700206	395402-00	Screw SM 7X8
1518	395052-15	Nut M4	3260	396007-19	Upper looper lever	705901	395421-00	Grub screw M4X5
1542	395052-34	Flush screw MAX8	3261	396007-20	Upper looper	707001	395048-00	Thread guide screw
1579	395052-57	Screw MAX10	3262	396007-21	Link	707908	395048-39	Screw M3X5
1699	395055-23	Lower shaft collar	3266	396007-22	Feed lifting eccentric	800245	395048-03	Needle bar thread guide
1757	395053-63	Grub screw M4X4	3267	396007-23	Feed regulator	800625	395128-23	Clip ring #8
1759	395055-65	Rasher STM-PM 8X1	3268	396002-59	Needle plate "A"	800626	395128-24	Clip ring #7
1838	395003-08	Screw MAX12	3269	396007-24	Presser foot lever cam	800641	395469-00	Push nut ϕ 4
1874	396006-91	Screw M3X6B	3270	396007-25	Needle bar assm	800703	395047-44	Roll pin
1886	396003-41	Flywheel	3272	396007-26	Presser bar spring			
1887	396003-42	Flywheel plate	3274	396002-79	Presser foot			
1888	396003-43	Washer 4X12X2	3276	396007-27	Needle bar crank axle			
1891	396003-45	Main shaft bearing	3293	396007-31	Blade support guide			
1893	396003-47	Looper rod eccentric	3294	396007-32	Cutting width guide			
1895	396003-49	Cutter rod eccentric	3295	396007-32	Cutting width control knob			
1901	396003-55	Washer STM-FT 7X1	3297	396007-33	Presser bar			
1908	396003-62	Needle bar stud 3/8x3/8x1/2	3297	396007-35	Needle crank pin			
1911	396003-65	Needle clamp	3302	396007-36	Blade holder spring			
1912	396003-66	Needle clamp screw	3305	396007-37	V-belt DC-320			
1913	396003-67	Upper needle bar bearing	3420	396007-58	Allen screw M4X8			
1914	396003-68	Lower needle bar bearing	3453	396007-62	Feed cam			
1920	396003-74	Foot pressure control	3456	396007-63	Washer STM-FT 16X24X0.5			
1927	396003-76	Screw M3X8B	3476	396007-66	Presser foot lever			
1933	396003-78	Looper axle bearing	3478	396007-67	Cutter rod			
1935	396003-80	Collar ϕ 7	3479	396007-68	Cutter rod axle			
1976	396004-14	Feed dog support spring	3480	396007-69	Moving blade driving arm			
2092	396004-54	Allen screw M3X8	3481	396007-70	Moving blade axle			
2927	396006-92	Grub screw MAX12	3482	396007-71	Moving blade axle collar			
3003	396005-78	Bear needle plate screw	3483	396002-60	Moving blade			
3089	396006-93	Thread cutter	3484	396007-72	Cutter spring			
3108	396006-94	Screw TPM 2. 6X3	3485	396007-73	Driving arm guide			
3109	396006-96	Looper axle bearing	3486	396002-61	Fixed blade			
3110	396006-96	Presser bar guide	3487	396007-74	Presser bar bearing			
3111	396006-97	Feed dog support axle	3492	396007-78	Thread cutter holder			
3112	396006-98	Feed regulator pin	3493	396007-79	Friction washer ϕ 7			
3113	396006-99	Lower looper axle	3499	396007-85	Allen screw M5X16			
3114	396007-00	Upper looper axle	3500	396007-86	Cushion ring ϕ 9			
3115	396007-01	Crank rod	3503	396007-88	Pin 3X12			
3117	396007-03	Feed crank	3504	396007-89	Bolt M4X8			
3118	396007-04	Needle bar crank	3508	396007-92	Needle guard			
3119	396007-05	Crank rod pin	3510	396007-93	Needle thread take-up lever			
3120	396007-06	Forked rod	3583	396007-98	Lower looper assm			
3121	396007-07	Lower shaft	3584	396007-99	Looper thread assm			
3122	396007-08	Feed crank axle	3587	396008-01	Screw M4X25			
3240	396007-12	Washer 3X3X0.5	3665	396008-08	Grub screw M4X3			
3247	396007-13	Fixed blade support	3680	396008-11	Felt washer 7X13X2			
3251	396007-14	Lower looper lever	3818	396008-21	Screw M3X5B			
3256	396007-15	Ball-connecting crank assm	3846	396008-29	Screw M3X6B			
3257	396007-16	Link pin - Left	3847	396008-30	Screw M3X8 SDS			
3258	396007-17	Looper eccentric	3848	396008-31	Flush screw M3X12			
3258	396007-17	Feed dog support	500201-1	396008-34	Hing screw FSB			
			500201-2	396008-35	Feed slide block			



PART NO.	TAVARO NO.	NAME OF PART	
1212	395049-46	Lamp socket only - P01	
1279	395049-20	Motor set nut - M4	
1579	395052-57	Screw MAX10	
2377	396004-75	Screw M3X8	
3211	396007-10	Flush screw M3X6	
3292	396007-30	Motor bracket	
3323	396007-49	Motor protection cover	
3329	396007-50	Lamp harness - 220-240V	
3402	396007-52	Foot cont. 4C-135B CSA type O	3903
3403	396007-53	Foot cont. 4C-135B UL type M	396008-37
3404	396007-54	Foot cont. 4C-136G CEE type A	
3405	396007-55	Foot cont. 4C-136G SA/NZ type I	
3406	396007-56	Foot cont. 4C-136G SEV type J	
3407	396007-57	Foot cont. 4C-136G SEV type B	
3446	396007-59	Motor set 3M-8521 US/CSA 115V	
3448	396007-60	Motor set 4M-804G VDE 220V	
3449	396007-61	Motor set 4M-704G 240V	
3490	396007-76	Insulation plate	
3506	396007-90	Lamp harness UL/CSA	
3662	396008-06	Motor set 4M-804G SEV 220V	
3766	396008-14	Spec. plate F-3 115V USA	
3767	396008-15	Spec. plate F-3 115V CND	
3768	396008-16	Spec. plate F-3 SEV	
3769	396008-17	Spec. plate F-3 220V	
3770	396008-18	Spec. plate F-3 240V	
3820	396008-22	Cord set CSA	
3821	396008-23	Cord set UL	
3822	396008-24	Cord set CEE	
3823	396008-25	Cord set SAA	
3824	396008-26	Cord set SABS	
3836	396008-27	Switch T-881	
3837	396008-28	Terminal block 3SRF-2B	
3885	396008-33	Motor set screw	
522018	395049-62	Light bulb E-12 120V	
574010	395297-00	Light bulb E-14 220V	
574029	395297-01	Light bulb E-14 240V	
707908	395049-39	Screw M3X5	
764225	395049-31	Sleeve ϕ 12X14	



PART NO.	TAVARO NO.	NAME OF PART							
1201	395049-43	Oiler							
2011	396002-01	Tweezers							
2014	395052-03	Thumb screw M4							
2015	396002-07	Spool cap							
2016	396002-08	Transparent disc							
2020	396002-09	Machine cover							
2082	396002-00	Screwdriver							
2379	396002-12	Brush							
3087	396002-27	Needles assort 80-90							
3273	396002-49	Material waste tray							
3303	396002-62	Needle plate "B"							
3324	396002-80	Accessory case							
3391	396002-43	Threader set							
3392	396002-31	Spool net, 60 cm long							
3486	396002-61	Fixed blade							
3501	396007-87	Felt washer $\phi 24X2$							
3596	396002-64	Cloth guide							
3668	396005-66	Gatherer support foot							
3743	396050-52	Instr. manual - Afr. + Eng.							
3744	396051-57	Instr. manual - Ger. + Fre.							
3745	396052-57	Instr. manual - Eng. + Fre.							
3746	396053-62	Instr. manual - Dan. + Nor.							
3747	396055-64	Instr. manual - Fin. + Swe.							
3748	396052-54	Instr. manual - Eng. + Spa.							
3749	396052-53	Instr. manual - Eng. + Dan.							
3750	396002-65	Blind-hem foot							
3771	396008-19	Styrofoam block set							
3772	396008-20	Carton							
3800	396002-75	Needle holder							
3884	396002-81	Accessory complete set							
567010	396008-36	Caution mark - CSA							

★ Not shown